



Maxar Intelligence

WorldView Legion, a very high resolution EO constellation, and the Globe in 3D

Per Lundblad

Managing Director Maxar Int. Sweden AB

Public – External Recipients

MAXAR
INTELLIGENCE



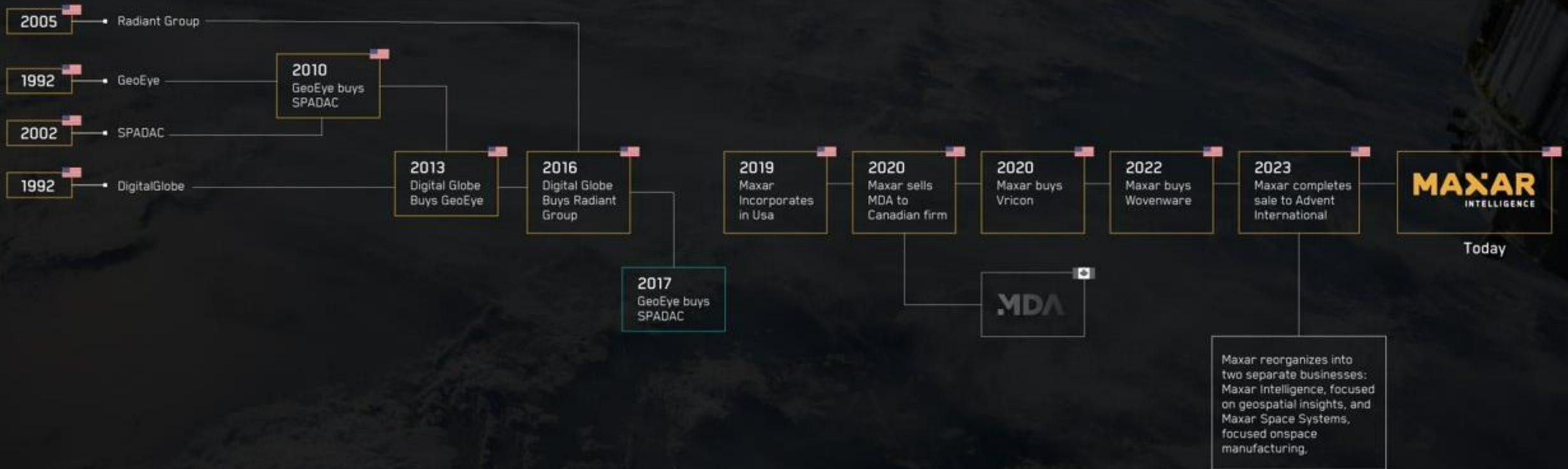
Who we are

Maxar Intelligence is a leading provider of secure, precise geospatial insights.

- We use the power of very high-resolution satellite imagery and software technology to build secure, AI-driven data products for critical missions on Earth and in space.
- Fueled by deep mission expertise, we deliver ground truth in near real-time to keep nations safe, improve global navigation, protect natural resources, speed up disaster response and more.



Maxar is a U.S.-controlled and operated company with a rich history



✕ We operate the world's most advanced Earth imaging constellation

ON ORBIT



WorldView-1
50 cm-class
resolution



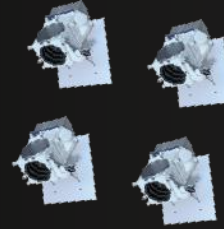
GeoEye-1
40 cm-class
resolution



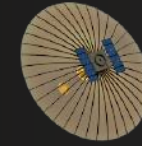
WorldView-2
40 cm-class
resolution



WorldView-3
30 cm-class
resolution



WorldView Legion
30 cm-class resolution



Umbra SAR
satellite access
25 cm resolution

PREPARING FOR LAUNCH



WorldView Legion
30 cm-class resolution

Maxar's electro-optical satellites collect more imagery at a higher resolution than other commercial imagery providers.

3.8M+

Sq km of
Earth imagery
capacity each day

Today

1.4B

Sq km of
Earth imagery
capacity each year

6M

Sq km of Earth
imagery capacity
each day

Mid-2025

Up to 15x

Revisits per day for
some locations

✘ WorldView Legion further expands our industry-leading capabilities

WorldView Legion™ is a fleet of six high-performing satellites that dramatically expands our ability to revisit the most rapidly changing areas on Earth, enabling more near-time insights.

More high-resolution capacity

- Triples our 30 cm-class capacity
- Collecting 6M+ sq km per day by mid-2025
- Increased daily point target collection capacity

“Dawn-to-dusk” collection

- Can collect imagery across more varied times of day

High revisit rates

- Will enable our constellation to revisit some areas up to 15x per day
- Mean-Time to Access will improve to less than 4 hours

Highest geometric accuracy

- Maintains our ability to offer the highest accuracy available today



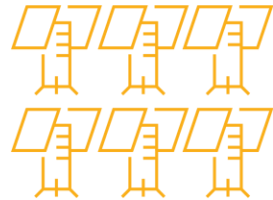


WorldView Legion by the numbers

WorldView Legion dramatically expands the Maxar constellation's ability to image and monitor the most rapidly changing areas on Earth multiple times a day to better inform our customers' critical, time-sensitive decisions.



3 LAUNCHES



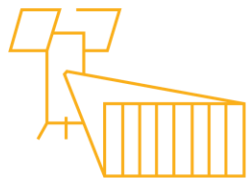
6 SATELLITES



30 CM CLASS RESOLUTION



<1.5 M RMSE ACCURACY



8 SPECTRAL BANDS



ENABLES UP TO

15 REVISITS PER DAY*



5 MILLION SQ KM CAPACITY PER DAY*

*With the full Maxar constellation



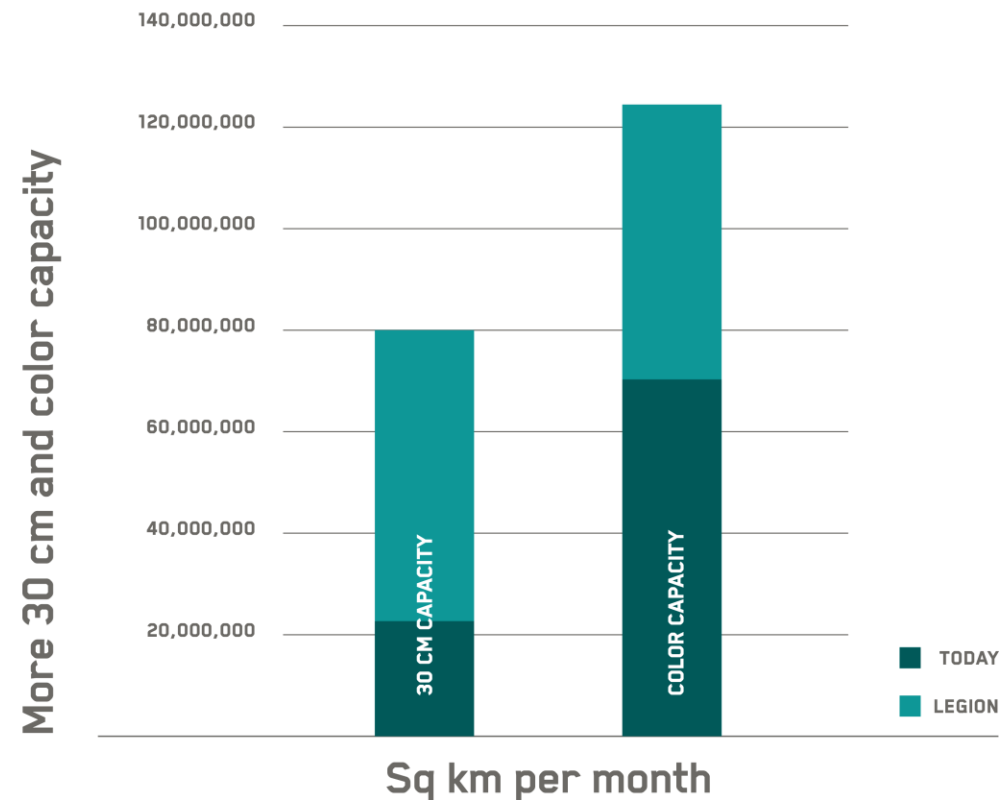
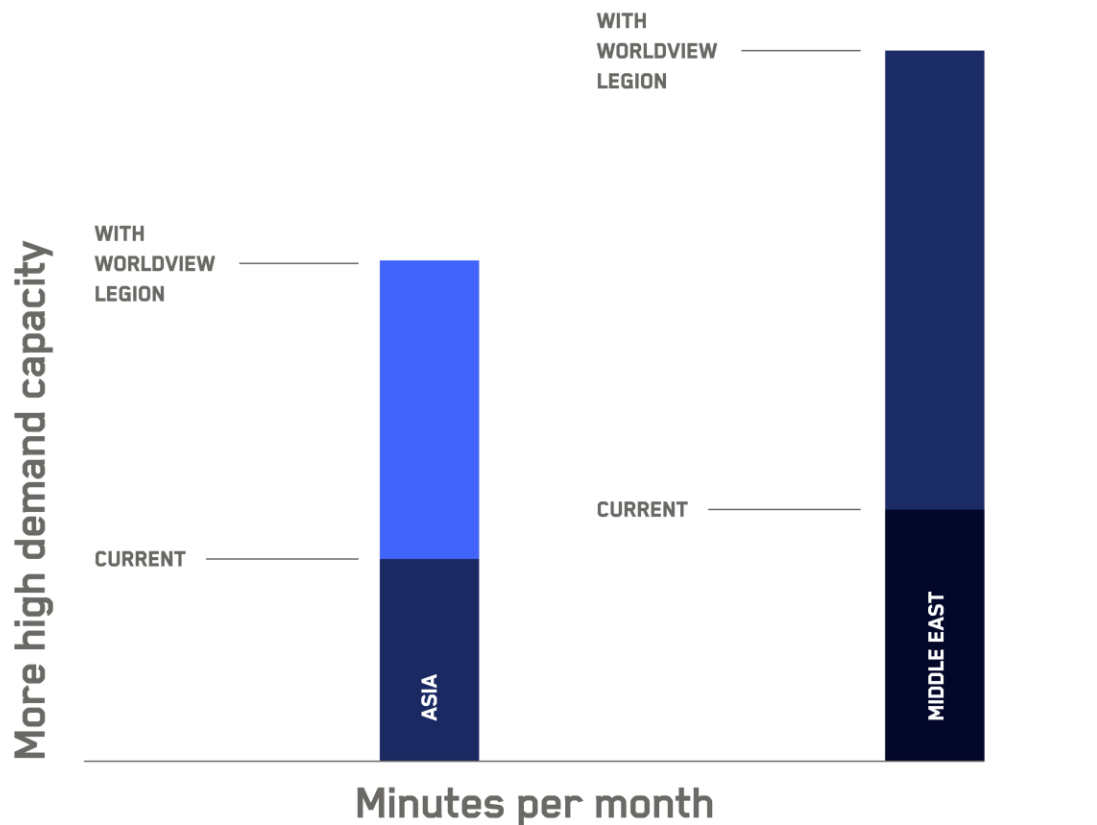
Capacity available pre/post-WorldView Legion launch

ENTIRE CONSTELLATION CAPACITY PER DAY WITH WORLDVIEW LEGION

3.7 Million sq km/day → 5.9 Million sq km/day

30 CM CLASS CAPACITY PER DAY WITH WORLDVIEW LEGION

680K sq km/day → 2.8 Million sq km/day





WorldView Legion combines image quality and frequency to fuel government and commercial use cases

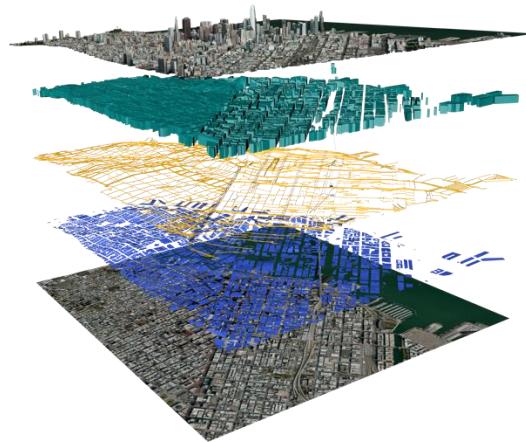
Remote monitoring

More imagery, collected from sunup to sundown, for a current view changing situations.



Accurate mapping

Accurate, comprehensive and timely data for a clearer, more reliable foundational picture of the planet.



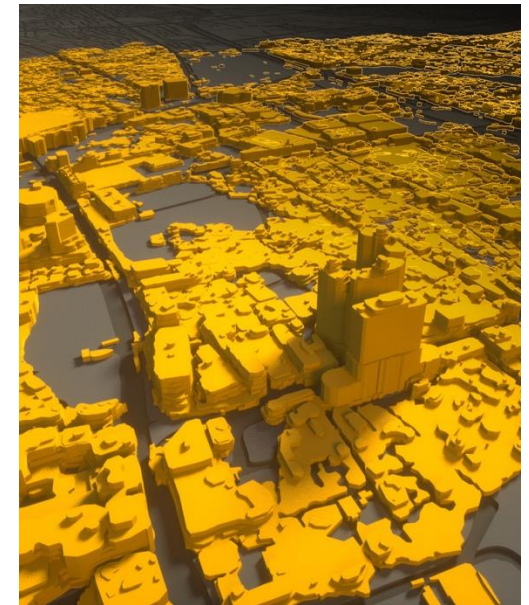
Analytics at scale

A continuous feed of current, clear imagery enables timely pattern-of-life and human geography analysis.



The Globe in 3D

High agility and stereo collection capabilities will produce more data to fuel creation of 3D models.



✕ High resolution provides clarity into on-ground conditions



1.5 m GSD
NIIRS 3.4



1.0 m GSD
NIIRS 4.0



50 cm GSD
NIIRS 5.0



DIFFERENT WEAPONS
LOAD IDENTIFIED

EXTENDED RANGE
FUEL TANKS

DIFFERENT WEAPONS
LOAD IDENTIFIED

30 cm-class GSD
NIIRS 5.7

✕ High resolution provides clarity into on-ground conditions
WorldView Legion will provide additional data for 15 cm HD imagery



Russian Convoy | Antonov International Airport, Ukraine | February 28, 2022 | Maxar WorldView-3 Satellite Image with HD processing

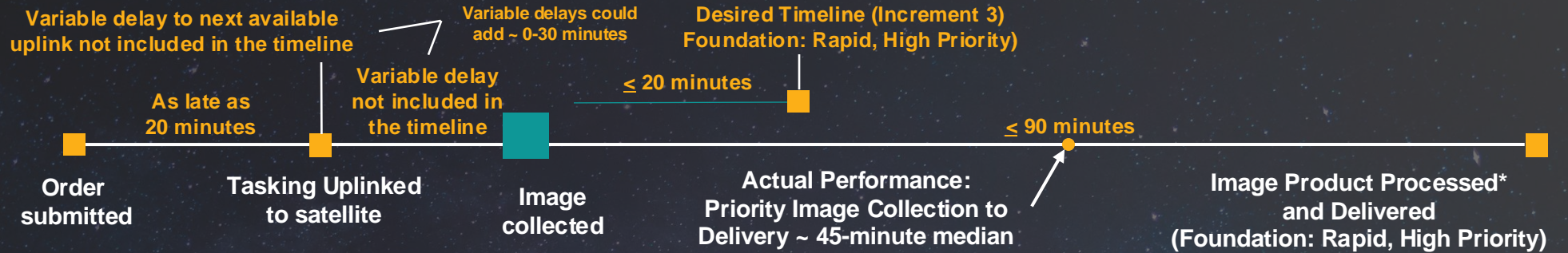


What's next: Reducing latency for faster sensor-to-decision timelines

Today

Rapid Access

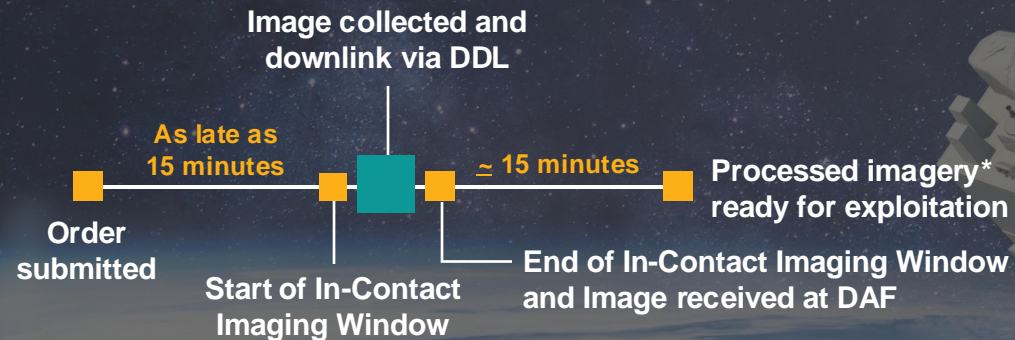
High and Rapid Priority Orders



Today

Direct Access

In-region direct tasking and downlink with regional or mobile ground terminals



Future

Future users

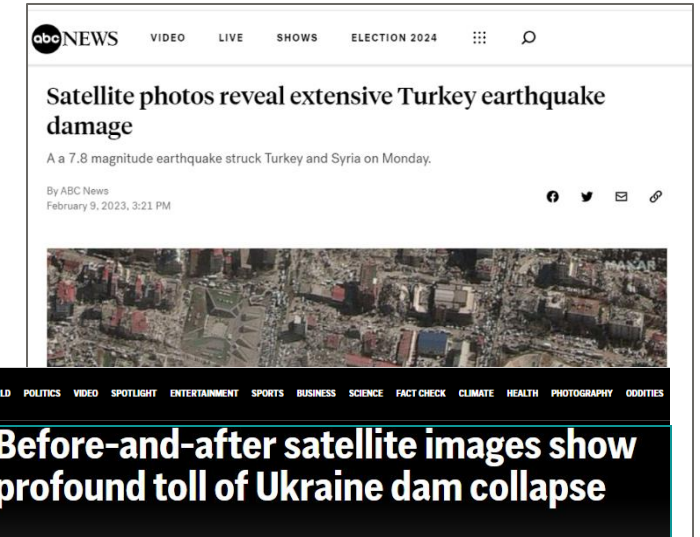
Global low-latency tasking and delivery to one or more distributed users



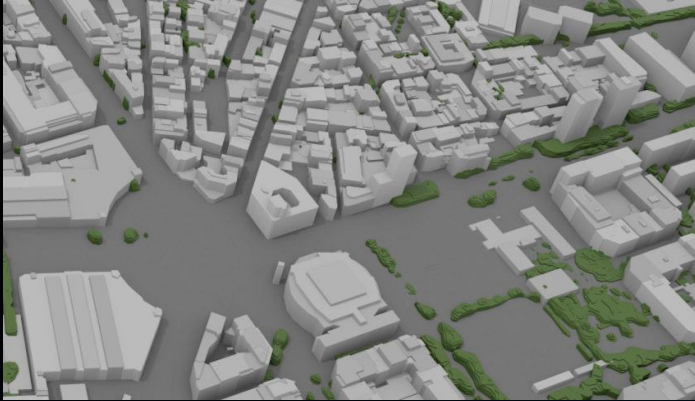


Enabling global transparency through the Maxar News Bureau

- Our News Bureau provides high-resolution imagery, analytics and expertise to trusted and respected media organizations around the world.
- We have more than 1,100 journalists in our network and have supported more than 1,500 projects since 2017.
- Maxar imagery has contributed to award-winning reporting, including Pulitzer Prize, Emmy and Peabody-winning investigations.



✕ Our core products and capabilities



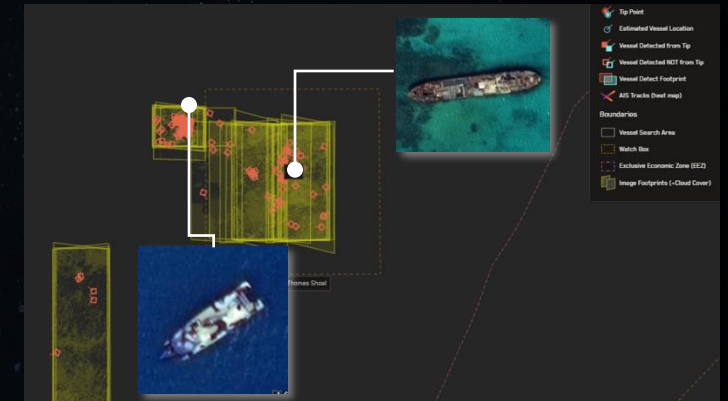
Information

- Best-in-class geospatial foundation and first-of-a-kind 2D + 3D products
- Space domain awareness products



Access

- Maxar Geospatial Platform Pro (MGP Pro)
- Tasking (RAP, DAP)



Analytics

- Change monitoring
- Thematic layers
- Crow's Nest Maritime Monitoring
- Automated Imagery Exploitation

Key Capabilities

Virtual constellation | Secure and resilient systems | Geospatial computation platform | Artificial intelligence & machine learning

✕ Deep dive: Information products



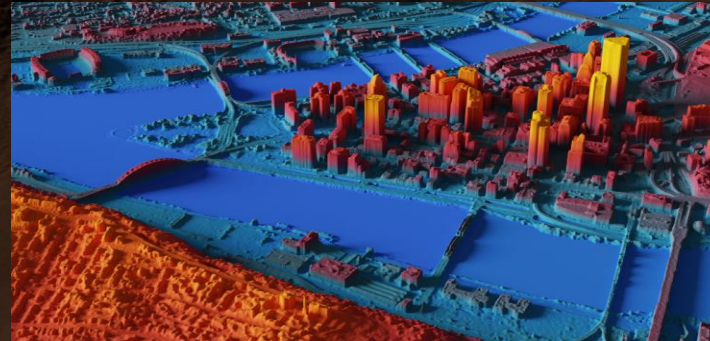
2D: Highest-quality satellite imagery

Optical imagery

- Native 30 cm resolution and derived 15 cm HD imagery
- < 5 m CE90 positional accuracy
- Multispectral diversity
- Analysis-ready data

Imagery basemaps

- Stunning, virtually seamless
- Accurate, consistent and actionable
- Local and global scale



3D: Most accurate representation of Earth

Precision3D™

- 50 cm resolution 3D TIN model with real textures and an absolute accuracy of 3 m in all dimensions
- Data layers include 3D vectors, 3D surface model, digital surface model and digital terrain model

P3DR

- Precision3D data layer automatically georegisters geospatial data—from drone FMV to satellite imagery



Non-Earth imaging: Enabling space domain awareness

- First company licensed to conduct non-Earth imaging (NEI)
- Can collect and distribute images of space objects across LEO, MEO, GEO
- Capable of imaging LEO objects at less than 6-inch resolution
- Can also support tracking of objects across a much wider volume of space



The highest-quality satellite imagery

OPTICAL IMAGERY

- Native 30 cm resolution and derived 15 cm HD imagery
- < 5 m CE90 positional accuracy
- Multispectral diversity

IMAGERY BASEMAPS

- Stunning, virtually seamless
- Accurate, consistent and actionable
- Local, regional and global scale

ANALYSIS-READY DATA

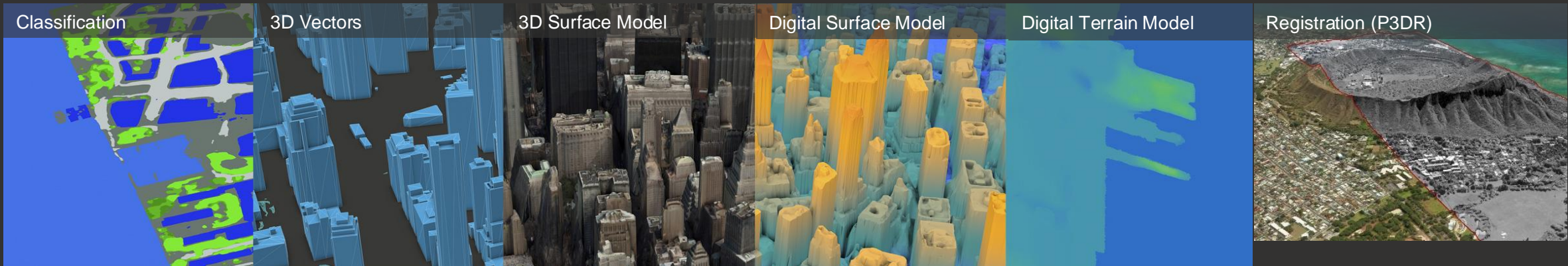
- Preprocessed time-series stacks of imagery
- Aligned and produced at a set standard
- Subscription access to our 125+ petabyte archive



✕ See the world how it really is, in fully immersive 3D

Maxar is building the Globe in 3D, pairing our massive satellite imagery archive with 3D technology to provide the most accurate representation of Earth for simulation, training, navigation, network planning and other complex environments.

Precision3D™ lets you visualize, analyze, plan and decide in highly accurate detail



An accurate, global digital surface model—high-resolution elevation data representing every single point on Earth.

Lifelike vector representations of 3D buildings, 3D vegetation and 3D transportation infrastructure.

Our most accurate representation of Earth. A 3D TIN model with textures on all sides.

An accurate global digital surface model—high-resolution elevation data representing every single point on Earth.

An accurate, high-resolution bare earth elevation data layer.

For sensor data to align with the real world, it must be georegistered. P3DR quickly, accurately and automatically georegisters geospatial data to the Globe in 3D.

✕ Deep dive: Access products and platforms



Tasking products

Direct Access

- Dedicated ground station for direct tasking of Maxar satellites
- Real-time imagery tasking up to 15 minutes prior to imaging event; receive data via direct, encrypted downlink in minutes

Rapid Access

- Web-based virtual satellite ground station for indirect tasking of Maxar and multisensor partner constellations
- Secure online virtual environment with tools for collection planning, satellite tasking and imagery archive

SAR

- Dedicated access to Umbra satellites for 24/7, all-weather coverage; decades of SAR processing expertise



Maxar Geospatial Platform (MGP) Pro

Fast, easy access to world's most advanced geospatial data and actionable insights:

- Stream and download access to over 3M sq km of daily imagery collections
- Cloud-based access to our 25+ year global imagery archive and data products
- Web-application, plugins and APIs to explore, analyze and exploit imagery
- Seamless integrations with most major GIS and remote sensing applications

ACTIONABLE INSIGHTS DAY OR NIGHT IN ALL WEATHER CONDITIONS

- Our combined electro-optical/SAR offering represents the most advanced, multisource geospatial intelligence solution for a wide range of defense, intelligence and commercial applications.
- Complement your optical strategy with ultra-high resolution (down to 25 cm) SAR imagery from Maxar's dedicated capacity partner Umbra.
- See through clouds, weather, smoke, dust and other effects for near real-time insights.
- Detect activity and monitor changes at sites of interest to understand change or analyze patterns of life.
- Leverage Maxar's decades of SAR processing expertise and 3D datasets.



Maxar® Geospatial Platform (MGP)

Simplify the discovery, purchasing and integration of geospatial data and analytics.

- Stream and download over 3 million sq km of daily imagery collections
- Cloud-based access to our 25+ year archive of global imagery and data products
- Web-application, plugins and APIs to explore, analyze and exploit imagery
- Seamless integrations with most major GIS and remote sensing applications



ACCESS ON YOUR TERMS

MGP Pro

Subscribe to secure, on-demand access to Earth intelligence.

MGP APIs

Integrate APIs, SDKs and plugins to simplify analytic tasks or power your apps.

MGP Xpress

Browse, discover and buy high-resolution satellite imagery.



Our unmatched geospatial services expertise will help enable this future

We unlock the power of our unique imagery, technology and Services analytical capabilities to develop in-depth reports for U.S. government, international and commercial customers. Those technologies include:

- **Machine learning & automation**
- **High-resolution EO and SAR data**
- **Crowdsourcing:** using our GeoHIVE capability to identify features of interest across broad areas, rapidly
- **Human Landscape:** Maxar's rich data product of foundational geospatial features
- **Geospatial statistical modeling** using a proprietary geostatistical application

